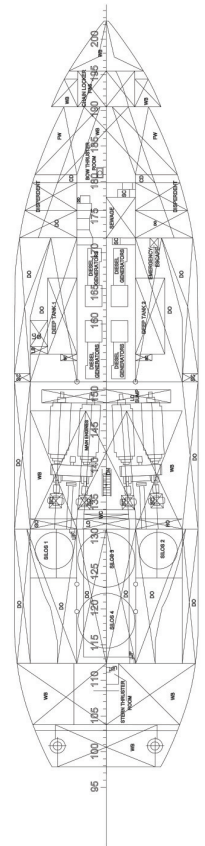
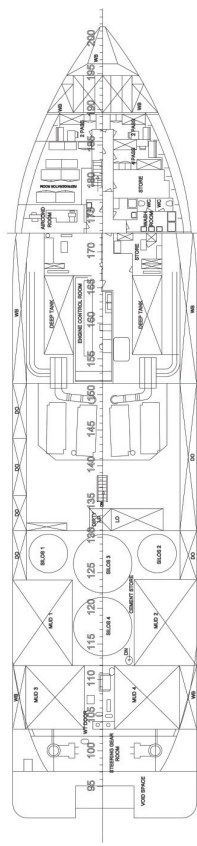
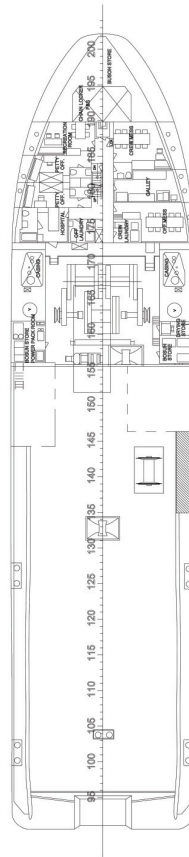
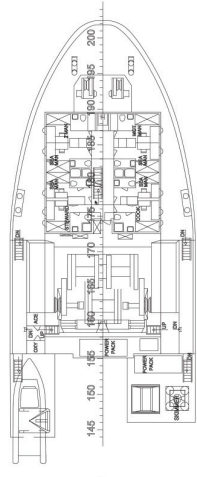
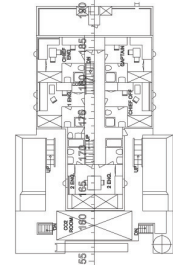
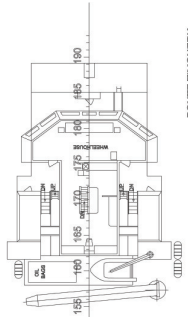
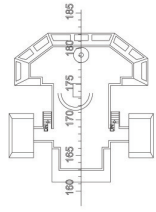
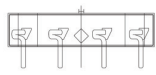
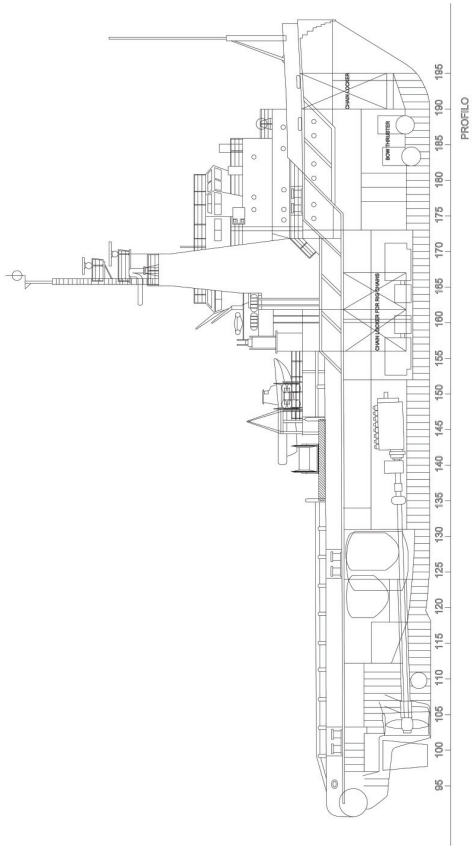


A.H. PORTO SANTO



DIMENSIONI PRINCIPALI / MAIN DIMENSIONS

LUNGHEZZA FT.	57.11 m.
LENGTH OVERALL	57.11 m.
LUNGHEZZA PER L'ARRETRARE	60.00 m.
LENGTH PER REAR	60.00 m.
LARGHEZZA	15.50 m.
BREADTH	15.50 m.
ALTEZZA DI COSTRUZIONE	7.50 m.
CONSTR. DEPTH	7.50 m.
MAX. DRAUGHT	6.45 m.